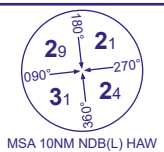
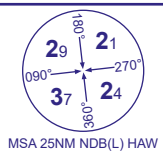


INSTRUMENT APPROACH - ICAO

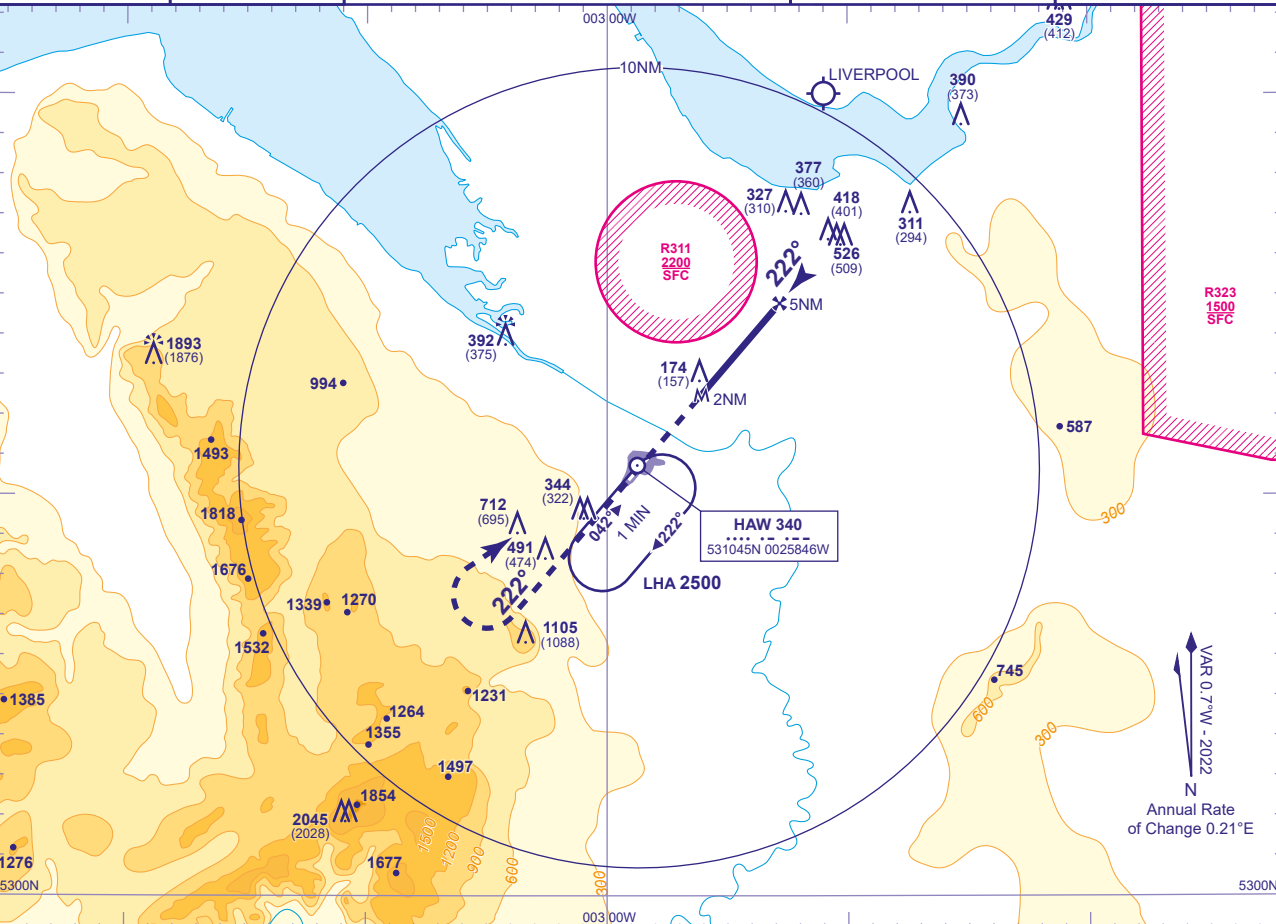
HAWARDEN
SRA RTR 2NM
RWY 22
(ACFT CAT A,B,C)



TWR 124.955	HAWARDEN TOWER
RAD 120.055, 130.015*	HAWARDEN RADAR
ATIS 125.430	HAWARDEN INFORMATION
*As directed by ATC, Not continuously monitored	

AD ELEVATION	45
THR ELEVATION	17
OBSTACLE ELEVATION	2045 AMSL (2028) (ABOVE THR)
BEARINGS ARE MAGNETIC	

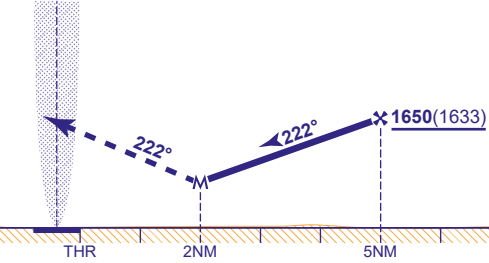
TRANSITION ALTITUDE	5000
---------------------	------



RADAR ADVISORY HEIGHTS Gradient 5.2%, 320FT/NM				
NM	5	4	3	2
ALT(HGT)	1650(1633)	1280(1263)	970(953)	650(633)

MAPt RTR 2NM
Climb straight ahead to 2500,
then turn right to **NDB(L) HAW**
at 2500 or as directed.

NDB(L) HAW



Aircraft Category		A	B	C
OCA (OCH)	Procedure	650(633)	650(633)	650(633)
	Total Area	800(755)	900(855)	
VM(C)OCA (OCH AAL)	East of RWY 04/22	700(655)	800(755)	1500(1455)

Rate of descent	G/S KT	160	140	120	100	80
	FT/MIN	840	740	630	530	420

NOTE Aircraft must remain outside EGR311 at all times.

CHANGE (2/25): EGR323 ADDED.